





3



1



1

- Semi Detached House
- Ideal Family Home
- Conservatory
- Freehold
- Viewing Essential
- Superbly Presented
- Three Bedrooms
- Close To Amenities
- Council Tax Band *B*
- Call For More Information





Situated in the popular Percy Crescent, this superbly presented, three-bedroom, semi-detached home will appeal to the growing family.

Internally the spacious accommodation briefly comprises: - entrance hall, bright and airy lounge with bay window, and a kitchen dining room with fitted wall and floor units and access to the rear. There is also a side lobby area currently used as a utility area. On the first floor there are three good sized bedrooms; two with fitted wardrobes and there is a wet room and separate WC. Further benefits includes electric heating and double glazing.

Externally there is a mature garden to the front and there is a delightful garden to the rear with a UPVC detached conservatory, patio area and decking. a perfect space to relax in the warmer months.

The location of the property is very central, and you have ease of access to a wealth of amenities. The house is in the original part of Percy Main village which has always been a favoured street. There are some delightful walks via the old Wagon Ways, and you are also close to the Tynemouth and the sea front. There are excellent transport links in the area and the Metro is only a short walk away.

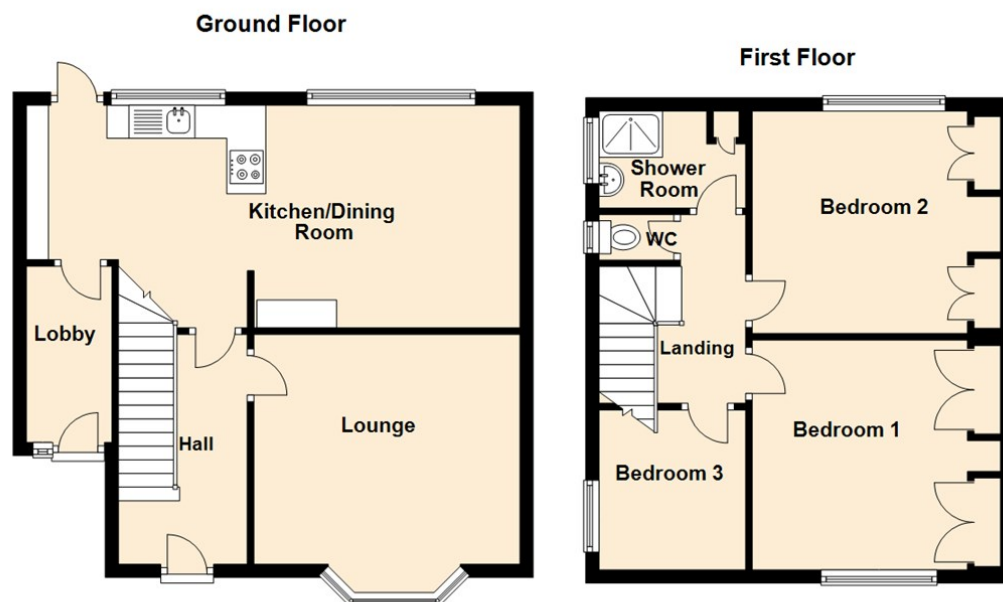
Viewing on this fantastic home is essential. For more information and to book, please call our Tynemouth branch on 0191 257 2000.

Tenure

The agent understands the property to be freehold. However, this should be confirmed with a licensed legal representative.

Council Tax band *B*.





Lounge 11'5" x 13'2" (3.48 x 4.03)

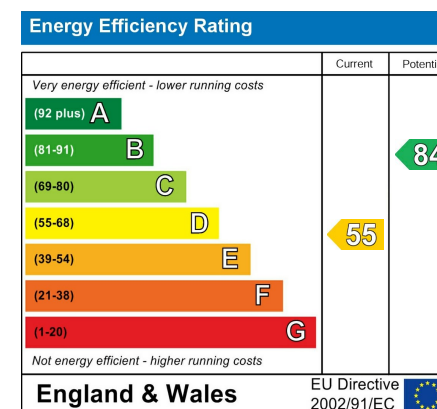
Kitchen 7'10" x 10'11" (2.41 x 3.34)

Dining Area 11'0" x 13'2" (3.37 x 4.03)

Bedroom One 11'7" x 12'4" (3.55 x 3.76)

Bedroom Two 11'0" x 12'4" (3.37 x 3.76)

Bedroom Three 7'11" x 7'3" (2.42 x 2.22)



The difference between house and home

You may download, store and use the material for your own personal use and research. You may not republish, retransmit, redistribute or otherwise make the material available to any party or make the same available on any website, online service or bulletin board of your own or of any other party or make the same available in hard copy or in any other media without the website owner's express prior written consent. The website owner's copyright must remain on all reproductions of material taken from this website.



www.janforsterestates.com

Gosforth
High Heaton
Tynemouth

Property Management Centre

0191 236 2070

0191 270 1122

0191 257 2000

0191 236 2680

